



The Ickworth

SUFFOLK

Insider Guide

- 1 Abbey Gardens 15 minutes
- 2 Nowton Park 15 minutes
- 3 St Edmundsbury Cathedral 15 minutes
- 4 Moyse Hall Museum 15 minutes
- 5 Lackford Lakes 20 minutes
- 6 Gillford Hall Vineyard 20 minutes
- 7 Bardwell Windmill 30 minutes
- 8 Kentwell Hall 30 minutes
- 9 Lavenham 30 minutes
- 10 Duxford Imperial War Museum 45 minutes



NORWICH

ROARR!
Theme PARK

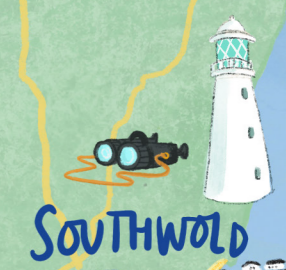


GREAT
YARMOUTH

Thetford



THETFORD
FOREST



SOUTHWOLD

BURY

ST EDMUNDS



THE ICKWORTH

NATIONAL
TRUST
ICKWORTH

Nowton
Park 2

LAVENHAM 9

Giffords Hall
Vineyard
TOUR 6

Long MELFORD 8

Sudbury

VINTAGE

IPSWICH



CAMBRIDGE 3

JACK'S
GELATO



NATIONAL
TRUST
WIMPOLE
ESTATE

BOTANIC
GARDENS



DUXFORD

DUXFORD
AIR
MUSEUM 10



DEDHAM
VALE
A.O.N.B

JIMMY'S FARM
& WILDLIFE PARK



COLCHESTER



COLCHESTER
ZOO

BRAINTREE

BISHOP'S
STORTFORD





THE ICKWORTH
Suffolk



INSIDER GUIDE

Day Exploring

Cambridge

Enjoy punting down the river Cam, either guided or without, taking in the views of the university backs. Enjoy a refreshing stop at Jack's Gelato for unusual and delicious flavours. Visit the botanical gardens and the tightly packed market stalls in the main square. King's College Chapel is a beautiful landmark in the city centre which is also well worth a visit! With convenient park and ride just outside of the city centre you can even avoid the traffic. If you have time, take a 20-minute car journey to Duxford Air Museum on the way home.

🚗 36 miles / 45-minutes

Southwold

Boasting a fully operated lighthouse of which you can visit on a 20-minute tour, an award-winning pier complete with restaurant and a lovely beach just a short walk away from the town centre shops and restaurants. Adnam's distillery is open for tours and is one of the areas' biggest brewers. Southwold's Maize Maze is nearby which has access to a park, tractors and a zipwire. Limited free parking can be found on Ferry Road. East Anglia's best kept "secret beach" Covehithe is just down the road, or a lovely 8-mile round trip walk from Southwold.

🚗 53 miles / 75-minutes

Jimmy's Farm & Wildlife Park

TV's famous chef Jimmy Doherty offers an exciting family day out. Head to the Wildlife Park, grab a bag of feed and meet the animals. Explore Jimmy's Butterfly House, have a drink and a snack at the Coffee Cabin, follow the path through the Woodland Timewalk and build a den. Head to the Restaurant or Field Kitchen for lunch and wander through the gardens and around the shops, head back to the Wildlife Park for one of our Close Encounters with the animals. Burn off the last of your energy in the play areas and bouncy pillow before leaving. On your way out head to the Farm Shop to pick up some of the farm's world-famous sausages.

🚗 32 miles / 45-minutes



Half Day Exploring

Bury St Edmunds

Visit the beautiful and historic town of Bury St Edmunds, this is also England's most dog friendly town! Blue paw prints are on all shop and restaurant windows to show you where your four-legged friends are very welcome. Market days are Wednesday and Saturday which welcomes a host of stalls and food pop ups in the centre of town. Visit the Abbey gardens and take in the beautiful gardens as well as the old monastery ruins and adventure playground. The cathedral is also open to visit and is a lovely stop. Take lunch at one of the many restaurants along Abbeygate Street and in fair weather enjoy dining al fresco for great people watching. With many boutique shops it is also a great place to shop! Several car parks offering both short and long stay. Tuesday's after 3pm sees free parking in all public car parks.

🚗 4 miles / 10-minutes

Duxford Air Museum

This is a great add on for a day spent in Cambridge, just 12-miles outside of the city centre. Duxford has many family activities such as D-Day Mission, the opportunity to be a Spitfire engineer as well as being able to see iconic aircraft take to the skies. Visit on an air show weekend and be amazed at planes flying in from all over the world to showcase historic aviation at it's best. Under 5s go free and parking is available on site.

🚗 33 miles / 40-minutes

Thetford Forest

Extensive woodland and parkland offering fun days out for all of the family. For those brave enough, take on the Go Ape challenge, please speak to reception for a discount code when booking. The park has excellent facilities including cafe, rest rooms and also offers archery, segway tours and a Gruffalo trail. Parking is payable on site at £11 for the full day. Stop at Elvedon Inn for an excellent lunch in a countryside pub.

🚗 22 miles / 39-minutes

EMAIL: info@ickworthhotel.co.uk
 IP29 5QE Suffolk
 Bury St Edmunds
 Hottinger
 The Ickworth
 LOCATION

PHONE: 01284 735350

Contact our team

Insider Guide
On-the-go

luxuryfamilyhotels.co.uk

Half Day Exploring

Lavenham

A historic British village steeped in history. Enjoy iconic sites such as the crooked house from the Harry Potter films as well as the Guild Hall. Lavenham is famous for it's quaint cream teas and boutique shops. Surrounded by beautiful countryside, making it a great base to explore the footpaths. Both free and paid parking is available. On your return to The Ickworth, consider a stop at Nowton Park for a great dog and family friendly walk through wildflowers and woodland. The cafe evens serves doggy ice-cream for your four legged friend.

🚗 13 miles / 25-minutes

Wimpole National Trust Estate

A living working estate with beautiful gardens and parkland to explore and enjoy. Heavy horse carriage rides run on set days throughout June - October and are bookable in advance. There is daily pig feeding as well as a farm playground which has an emphasis on fun and sustainability. National Trust members have free entry, car parking is included in ticket price and dogs on leads are very welcome.

🚗 40 miles / 45-minutes

Giffords Hall Vineyard Tour

Giffords Hall is a fantastic local vineyard just 8-miles away from The Ickworth and is a beautiful spot to taste some of the award-winning wine from the region. Situated on an ancient glacial riverbed on a 19-acre site, the vineyard offers tours and tastings as well as an on-site shop. Consider stopping at the Greene King Brewery in Bury St Edmunds on your way back for a tour and visit the gift shop or take lunch at the very highly regarded Crown at Hartest pub.

🚗 8 miles / 15-minutes



WALKS

Ickworth Estate Circular Walk
 Enjoy a gentle circular walk around the Ickworth Estate, perfect for enjoying the estate's diverse landscapes.
 🚶 6.4km

Westley Village & Beyond
 A scenic walk that takes you from The Ickworth Estate to the nearby village of Westley.
 🚶 8km

Ickworth Estate to Nowton Park Walk
 A longer walk through countryside paths leading from Ickworth Estate to Nowton Park.
 🚶 8km

Day Exploring

Colchester Zoo

Set in 60 acres of parkland and home to over 155 species of animals, families will delight in seeing an abundance of wildlife. There are plenty of undercover areas and habitats to explore no matter what the weather and there are plentiful refreshment options throughout the zoo. There are daily interactive opportunities such as feeding the giraffes and holding reptiles. Car parking is included in the entry price.

🚗 49 miles / 60-minutes

Long Melford

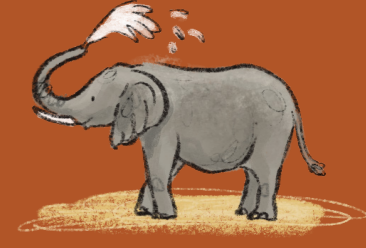
An exciting jam packed day with the opportunity to visit Kentwell Hall, a moated Tudor House which re-enacts historical events as well as offering family and child focused activities. Next up stop by Melford Hall, a National Trust house and estate with plentiful parkland and walking as well as Beatrix Potter themed activities within the house. The estate is dog friendly, and they run family activities in high season. Long Melford is a nearby village with it's own brewery (visit on a Friday to sample their famous mac and cheese), several antique shops as well as a lovely village atmosphere.

🚗 13 miles / 25-minutes

Roarr Dinosaur Park

A full day out of adventure for all the family. The dinosaur park has high ropes, soft play adventure, a theatre, amusement roads, animations shows as well as dinosaur walks through the park. There are also small animal encounters, a splash zone and dippy's raceway. Seasonal variations on activities and pricing occur. Free parking included with ticket admission. Food provided on-site in various outlets and indoor and outdoor picnic seating areas. Speak to reception if you would like us to prepare you a picnic.

🚗 55 miles / 80-minutes



LOCAL AREA

River Stour
 Discover Constable's River with a boat trip along the River Stour in Sudbury.
 🚗 20 miles / 40-minutes
 🐾

National Trust
 Hop on a bike and explore the 1,800-acre National Trust estate that surrounds our stately manor.
 🚗 0-miles
 ☕ 🐾

Kentwell Hall
 Take a trip to Kentwell Hall, a romantic moated redbrick Tudor mansion with extensive gardens and a rare breed farm. It's been a much-loved family home for 500 years and holds famous Tudor re-creation events.
 🚗 14 miles / 35-minutes
 ☕ 🐾

Newmarket
 Hear the sound of hooves and enjoy all the excitement of a day's horse racing at Newmarket. See equine stars at work and meet trainers, mares and foals with a behind the scenes tour at Newmarket's racing headquarters with Discover Newmarket.
 🚗 17-miles / 35-minutes
 ☕ 🐾

Key
 🐾 Dog-friendly
 ☕ Café / Pub